



SOLID
TO SUCCEED

TELESCOPIC BOOM LIFT

XGS85J2

Standard configuration

- 3-entry platform with side revolving door
- Cold start components
- Engine air pre-filter kit
- Engine condition monitoring and start protection device
- Axle oscillation
- Lowering and moving alarm
- Tilt alarm
- Emergency stop of platform and chassis
- Emergency power unit
- Axle oscillation pressure detection system
- 4-wheel braking system
- Self-leveling platform
- Proportional joystick control
- Drive enable
- Lockable engine house
- Full time positive traction drive
- Full speed traveling motor
- Telematics pre-interface
- Anti-extrusion protection device
- Hydraulic oil radiator
- Harsh environment kits
- Thumb rocker steering



Working height
22 meters



Lift capacity
300/460Kg



Diesel
power



Optional configuration

- Gray filled tire
- Deutz D2.9L4
- Hydraulic generator
- Anti-extrusion protection device
- Platform power supply
- Air pipe to platform
- Tool tray
- Working light assembly
- Fall arrest assembly
- Platform anti-squeeze auxiliary track
- Platform with half-height mesh panel

XCMG FIRE-FIGHTING SAFETY EQUIPMENT CO.,LTD

No.17 Zhujiang East Road, Hi-Tech Development Zone, Xuzhou, Jiangsu, China
mewp@xcmg.com

XGS85J2



SOLID
TO SUCCEED

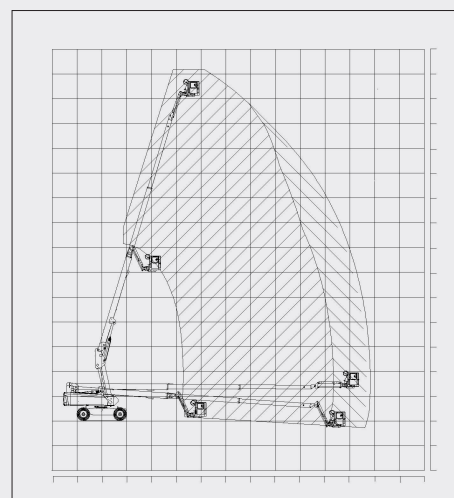
Telescopic Boom Lift-Engine Powered

Item	Metric	
Dimension		
Overall dimension - stowed state	Length	11690mm
	Width	2490mm
	Height	2820mm
Overall dimension - transportation	Length	9550mm
	Width	2490mm
	Height	3000mm
Platform dimension	Length	2400mm
	Width	900mm
	Height	1150mm
Wheelbase		3000mm
Fly jib length (fully retracted/fully extended)		1850mm
Min. ground clearance		320mm

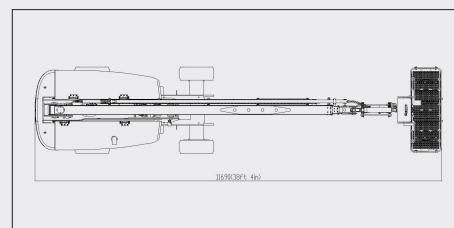
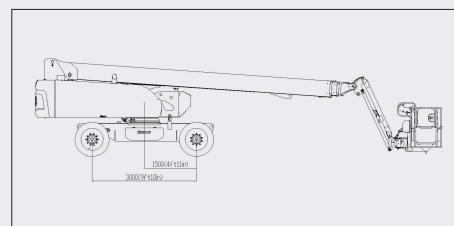
Performance	
Max. working height	28.8m
Max. platform height	26.8m
Max. working range	22m
Max. lift capacity	300kg (unlimited)/460kg(limited)
Max. number of occupants	2/3
Max. working slope	X-5°/ Y-5°
Telescopic boom luffing range	-4°~ +73°
Fly jib luffing range	-65°~ +70°
Turntable rotation	360°
Platform rotation	160°
Total weight	17300kg
Driving speed (stowed)	5.5km/h
Driving speed (raised or extended)	0.6km/h
Min. turning radius (inside/outside)	4400mm/6250mm
Turntable tailswing (stowed)	1890mm
Max. gradeability	45% (24°)

Power source	
Control	12V DC proportional control
Emergency power supply	12V/220Ah
Engine model	Kubota V2607
Engine-power/rpm	47.3kW/(2400r/min)
Max. engine torque	221.7 N · m(1500r/min)
Engine emission standard	Tier 4
Hydraulic tank capacity	210 L
Fuel tank capacity	180 L

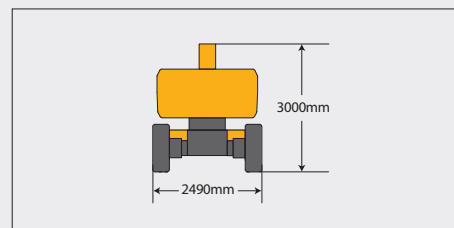
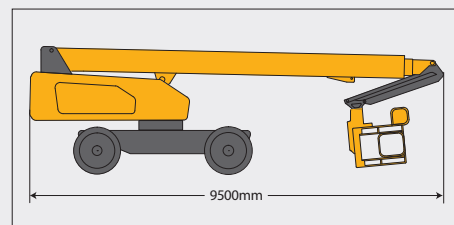
Tire	
Tire size	995×380mm
Tire ground pressure	9.39kg/cm ²
Driving wheels	4
Braking wheels	4
Steering wheels	2



Stowed



Trans



The print does not belong to the contract, nor a part of the commercial contract. We reserve the right to revise the product model, parameters, configuration based on the continuous improvement requirements of the product, without prior notice. Pictures are for reference only, and the specific product shall depend on the real product. The final interpretation rights belong to XCMG.