

XGR20ACJ



SOLID
TO SUCCEED

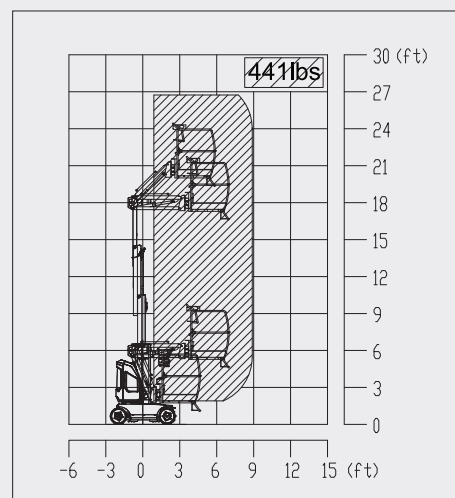
Mast Lift-Electric

Item	Metric	Imperial
Dimension		
Overall dimension - stowed state	Length	2230mm
	Width	990mm
	Height	2000mm
Overall dimension - transportation	Length	2230mm
	Width	990mm
	Height	2000mm
Platform dimension	Length	950mm
	Width	900mm
	Height	1150mm
Wheelbase	1200mm	3ft1in
Fly jib length	1170mm	3ft 10in
Min. ground clearance	90mm	4in

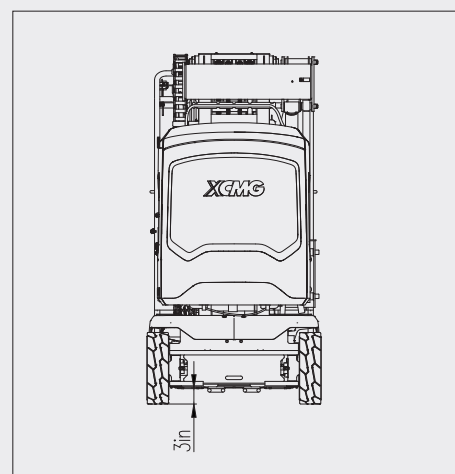
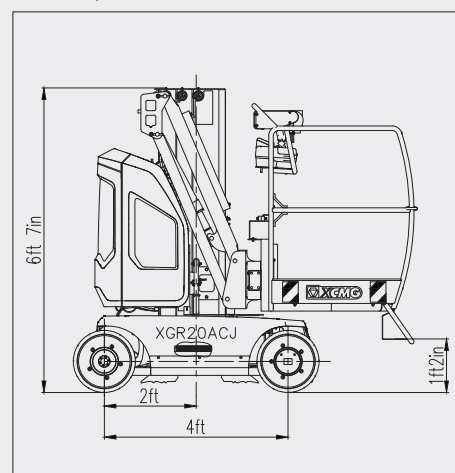
Performance		
Max. working height	8200mm	26ft11in
Max. platform height	6200mm	20ft4in
Max. working range	2600mm	8ft6in
Max. up and over clearance	5400mm	17ft9in
Max. lift capacity	200kg	441 lbs
Max. number of occupants	2	
Max. working slope	X-2.5° / Y-2.5°	
Fly jib luffing range	-67°~45°	
Turntable rotation	345°	
Platform rotation	/	
Total weight	2350kg	5181lb
Driving speed (stowed)	5km/h	3.1mph
Driving speed (raised or extended)	0.6km/h	0.37mph
Min. turning radius (inside/outside)	1300mm/2100mm(front)	≤ 4ft3in/ ≤ 6ft11in(front)
	700mm/1700mm (back)	≤ 2ft4in/ ≤ 5ft6in(back)
Turntable tailswing (stowed)	170mm	7in
Max. gradeability	25% (14°)	

Power source		
Control	24 V DC proportional control	
Traveling motor	2 kw/16 V	
Emergency power supply	/	
Main power source - battery	24V/265Ah	
Main power source - charger	24V/36A	
Hydraulic tank capacity	6L	1.58gal

Tire		
Tire size	406mm×125mm	1ft4in×0ft5in
Tire ground pressure	10.83kg/cm²	154.9psi
Driving wheels	2	
Braking wheels	2	
Steering wheels	2	



Stowed / Trans



The print does not belong to the contract, nor a part of the commercial contract. We reserve the right to revise the product model, parameters, configuration based on the continuous improvement requirements of the product, without prior notice. Pictures are for reference only, and the specific product shall depend on the real product. The final interpretation rights belong to XCMG.



SOLID
TO SUCCEED

MAST LIFT XGR20ACJ

Standard configuration

- 2-wheel drive
- Lowering and moving alarm
- Tilt alarm
- Horn with adjustable volume
- Emergency stop of platform and chassis
- 2-wheel braking system
- Proportional self-leveling system
- Proportional joystick control
- Drive enable
- Full time positive traction drive
- Telematics pre-interface
- Anti-extrusion protection device
- Harsh environment kits
- Thumb rocker steering



Working height
8.2 meters



Lift capacity
200Kg



Electric
power



Optional configuration

- Working light assembly
- Platform air pipe

XCMG FIRE-FIGHTING SAFETY EQUIPMENT CO.,LTD

No.17 Zhujiang East Road, Hi-Tech Development Zone, Xuzhou, Jiangsu, China
mewp@xcmg.com