



XGA32ACJ

MOBILE ELEVATING WORK PLATFORM

Comply with ANSI/CSA



XGA32ACJ

MOBILE ELEVATING WORK PLATFORM

FEATURES

MEASUREMENTS

11.61 m (38' 10") working height
230 kg (507 lb) lift capacity
1.17 m x 0.76 m (3' 10" x 2' 6") steel platform

PERFORMANCE

22x7 grey non-marking tires
full speed drive motor
platform and ground emergency stop button
proportional joystick control
horn
hour meter

Protective devices against harsh environments
Active defence devices
telematics prefabricated connector devices

platform overload alarm
lowering and motion alarm
tilt alarm

2-wheel driving and braking system
Steering differential speed system
Electrohydraulic proportional control system
Proportional self-leveling system

POWER

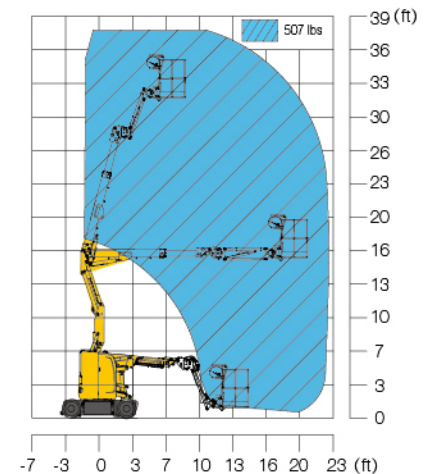
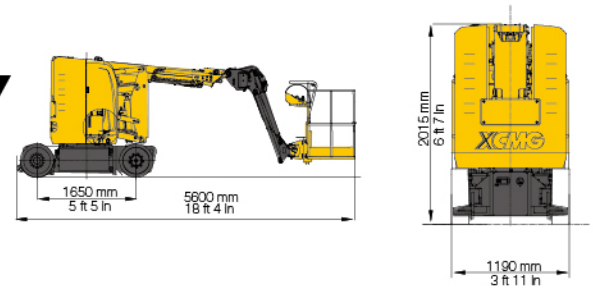
400 Ah/48 V DC power source
4.5 kw/32 V DC power unit
1.9 kw/12 V DC auxiliary power unit

HIGHLIGHT OPTIONS

- Compact structure, one standard container can hold 3 models.
- Combined with articulated boom and telescopic boom, it can realize vertical elevating, flexible stretching and has excellent rough terrain ability.
- Zero tail swing and the turning radius is as low as 10ft 8in, suitable for narrow space working.
- Jib rotation $\pm 90^\circ$, 160° platform rotation, providing large working range.
- Chassis tilt protection, platform overload alarm, emergency lowering, safe speed limitation, flexible start and stop technology make operation safe.

OPTIONS

Tool tray
Working lights
AC power cords to platform
Air line to platform



MAIN PARAMETER

Item	Metric	Imperial
Overall dimensions (stowed)	5.6 m x 1.19 m x 2.015 m	18 ft 4 in x 3 ft 11 in x 6 ft 7 in
Overall dimensions (transportation)	5.36 m x 1.19 m x 2.015 m	17 ft 7 in x 3 ft 11 in x 6 ft 7 in
Platform size	1.17 m x 0.76 m x 1.15 m	3 ft 10 in x 2 ft 6 in x 3 ft 9 in
Wheelbase	1.65 m	5 ft 5 in
Minimum ground clearance(center)	85 mm	3 in
Maximum working height	11.61 m	38 ft 1 in
Maximum platform height	9.61 m	31 ft 6 in
Maximum working range	6.86 m	22 ft 6 in
Lift capacity	230 kg	507 lbs
No.1 boom luffing range	-12.5°~70°	-12.5°~70°
No.2 boom luffing range	-5.5°~75°	-5.5°~75°
Jib luffing range	-70°~70°	-70°~70°
Turntable rotation	355°	355°
Platform rotation	160°	160°
Tailswing	0	0
Maximum drive speed	5 km/h	3.1 mph
Minimum turning radius(outside/inside)	3.25 m/1.76 m	10 ft 8 in/5 ft 9 in
Weight	7000 kg	15432 lbs
Gradeability	35%	35%
Power source	400 Ah/48 V DC	400 Ah/48 V DC
Power unit	4.5 kw/32 V AC	4.5 kw/32 V AC
Auxiliary power unit	1.9 kw/12 V DC	1.9 kw/12 V DC
Tires	22x7 grey non-marking tires	22x7 grey non-marking tires