

# XGR20AC



**SOLID**  
TO SUCCEED

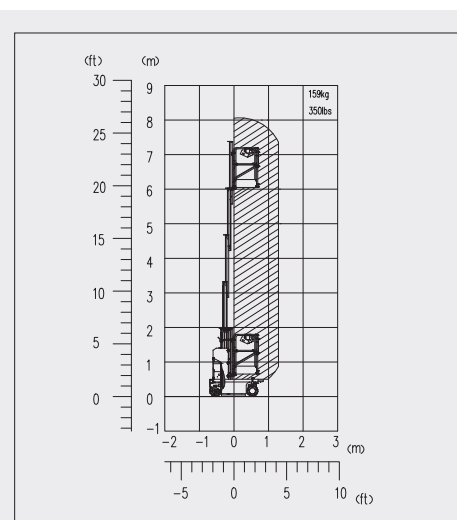
## Mast Lift-Electric

Item		Metric	Imperial
<b>Dimension</b>			
Overall dimension - stowed state	Length	1390mm	4ft 6in
	Width	760mm	2ft 6in
	Height	1980mm	6ft 6in
Overall dimension - transportation	Length	1390mm	4ft 6in
	Width	760mm	2ft 6in
	Height	1980mm	6ft 6in
Platform dimension	Length	720mm	2ft 5in
	Width	760mm	2ft 6in
	Height	1130mm	3ft 8in
Wheelbase		1070mm	3ft 6in
Min. ground clearance		14/79mm	0.6in/3in

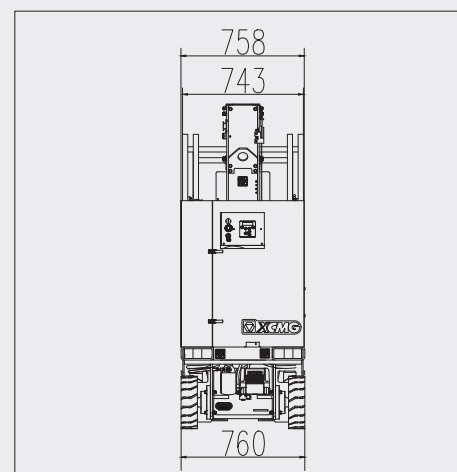
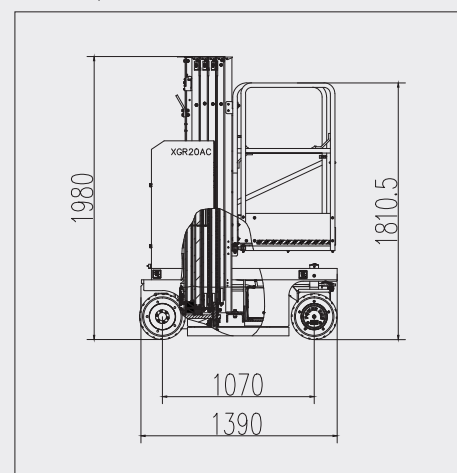
<b>Performance</b>		
Max. working height	8m	26ft 2in
Max. platform height	6m	19ft 8in
Max. lift capacity	159kg	350 lbs
Max. number of occupants	1	
Total weight	1270kg	2800lbs
Driving speed (stowed)	4km/h	2.5mph
Driving speed (raised or extended)	0.8km/h	0.5mph
Min. turning radius (outside)	1.55m	5ft
Max. gradeability	25%/20%	

<b>Power source</b>		
Control	24 V Maintenance-free lead-acid battery	
Traveling motor	0.6/24 kW/V	
Emergency power supply	/	
Main power source - battery	150 Ah	
Main power source - charger	24 V/A	
Hydraulic tank capacity	10 L	2.64gal

<b>Tire</b>		
Tire size	323mm×100mm	1ft 1in×4in
Tire ground pressure	6.23kg/cm <sup>2</sup>	88.65 PSI
Driving wheels	2	
Braking wheels	2	
Steering wheels	2	



Stowed / Trans



The print does not belong to the contract, nor a part of the commercial contract. We reserve the right to revise the product model, parameters, configuration based on the continuous improvement requirements of the product, without prior notice. Pictures are for reference only, and the specific product shall depend on the real product. The final interpretation rights belong to XCMG.



**SOLID**  
TO SUCCEED

# MAST LIFT XGR20AC

## Standard configuration

- Front-wheel drive
- Emergency stop controls on platform and ground
- Non-slip metal platform
- Load alarm
- Descent alarm
- Three-second descent pause
- Multi-axis tilt sensor
- Multi-disc brake system
- Automatic braking system
- Pothole protection device
- Onboard fault diagnosis system
- Electric horn
- Automatic speed reduction at height
- Charging protection system
- Removable upper control unit
- Smart charger
- Longitudinal forklift transport slots
- Flashing indicator light
- User-friendly control system
- Platform control with battery level display
- Manual platform lowering valve
- Tilt sensor and audible alarm



Working height  
8m



Lift capacity  
159Kg



Electric  
power



## Optional configuration

- Alimentation externe pour la plateforme

**XCMG FIRE-FIGHTING SAFETY EQUIPMENT CO.,LTD**

No.17 Zhujiang East Road, Hi-Tech Development Zone, Xuzhou, Jiangsu, China  
mewp@xcmg.com