



XG4555AC

MOBILE ELEVATING WORK PLATFORM

Comply with ANSI/CSA



XG4555AC

MOBILE ELEVATING WORK PLATFORM

FEATURES

MEASUREMENTS

15.8m (51' 10") working height
Up to 350kg (771.6 lb) lift capacity

PRODUCTIVITY

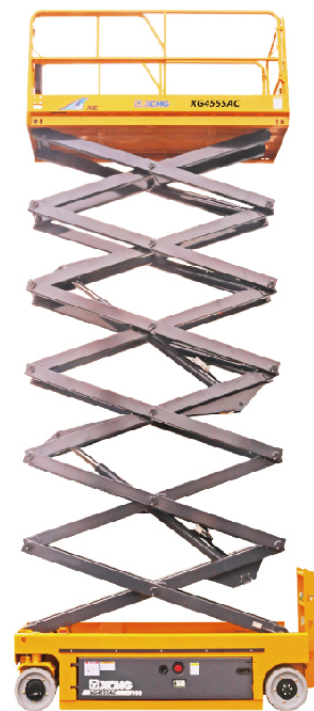
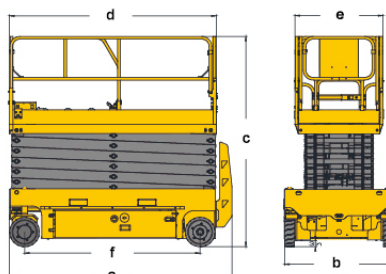
2.64 m (8' 8") x 1.12 m (3' 8") steel platform
0.9 m (2' 11") extension platform
Front wheel drive
25% theoretical gradeability – stowed/lowered position
Platform control with battery charge indicator and diagnostic display
Manual platform lowering valve
Both platform and ground control emergency stop activation
Multiple disc brakes
Manual brake release
Solid non-marking tires
Mobile pothole protection
Tilt alarm
Hour meter
Lift and lower alarm
Horn
Dual flashing beacons
Motion alarm
Load warning system

POWER

24V DC

OPTIONS

- AC power cord connected the to the platform (including plug, socket, leakage cut-off protection)
- Air pipes connected to the platform
- Work light



MAIN PARAMETER

Item		Metric	Imperial
Machine Dimensions	a.Length (without ladder)	2.84 m (2.63 m)	9 ft 4 in (8 ft 8 in)
	b.Width	1.39 m	4 ft 7 in
	c.Height (Platform Folded)	2.72 m (2.18 m)	8 ft 11 in (7 ft 2 in)
f.Wheel base		2.24 m	7 ft 4 in
Wheel track		1.263 m	4 ft 2 in
Minimum ground clearance (Pot hole protector – raised/lowered)		77.5 mm/20 mm	3 in/0.78 in
Dimension of working platform	d.Length	2.64 m	8 ft 8 in
	e.Width	1.12 m	3 ft 8 in
	Height	1.263 m	4 ft 2 in
	Extension length of auxiliary platform	0.90 m	2 ft 11 in
Machine Center of Gravity	Horizontal distance to front axle	1.09 m	3 ft 7 in
	Height of Center of Gravity	0.8 m	2 ft 8 in
Total weight of machine		3680 kg	8113 lb
Maximum height of platform		13.8 m	45 ft 3 in
Minimum height of platform		1.58 m	5 ft 2 in
Maximum working height		15.8 m	51 ft 10 in
Minimum turning radius (inner wheel/outer wheel)		0 m/2.65 m	0 in/8 ft 8 in
Work platform lift capacity		350 kg	771.6 lb
Work platform lift capacity – platform extended		115 kg	253 lb
Work platform lift time		65 s-82 s	65 s-82 s
Work platform descend time		61 s-80 s	61 s-80 s
Maximum Drive Speed - Lowered		4 km/h	2.49 mph
Maximum Drive Speed - Elevated		0.8 km/h	0.5 mph
Maximum theoretical gradeability		25%	25%
Tilt warning angle (side, forward, and backward)		1.5°/3°	1.5°/3°
Rated motor power		4.5 kW	6.03 hp
Battery	Model	3-EV-225	3-EV-225
	Voltage	24 V	24 V
	Capacity	280 Ah	280 Ah
	Manufacturer	Leoch	Leoch
Tire models		Non-marking and solid / 381x127 mm Non-marking and solid / 1 ft 3 in x 5 in	